

Ender-3 V2 Neo

Easy and Accurate Printing



CR Touch Auto-leveling



Full-metal Bowden Extruder



Stable Integrated Design



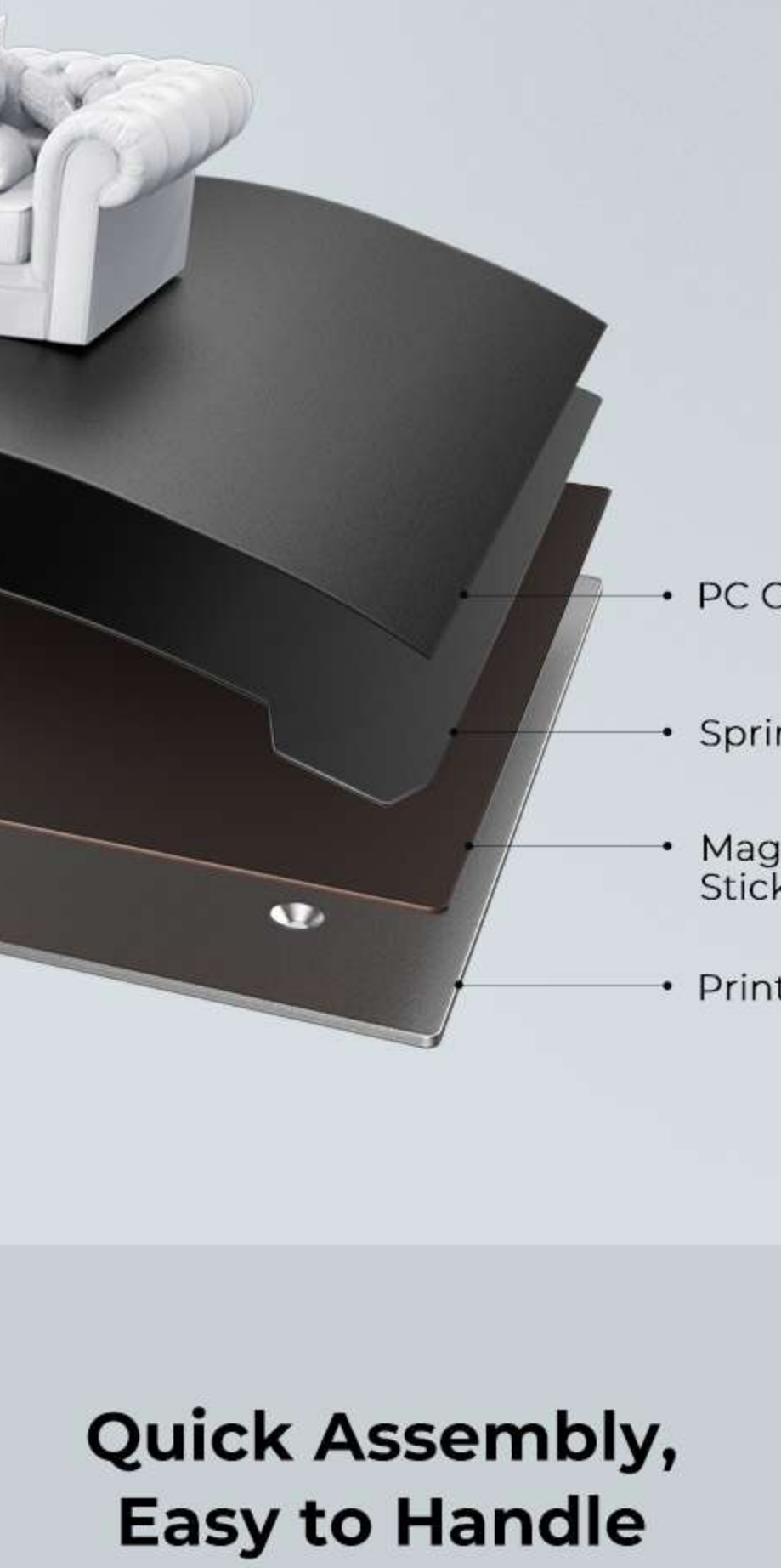
Classic and Stable Integrated Design

Full-metal integrated design with a sturdy gantry for stable printing. The smooth surface of the gantry looks more simple and aesthetic.



Enhanced Accuracy with CR Touch

CR Touch auto-leveling completes the 16-point print height's compensation on the build surface, ensuring the leveling accuracy and improving the printing quality.



A rotary knob is added to facilitate smooth feeding and withdrawal of filaments.

Full-metal Bowden Extruder for Smooth Feeding

The full-metal Bowden extruder has greater extrusion force and is more durable.



Adhesive and Bendable Build Plate

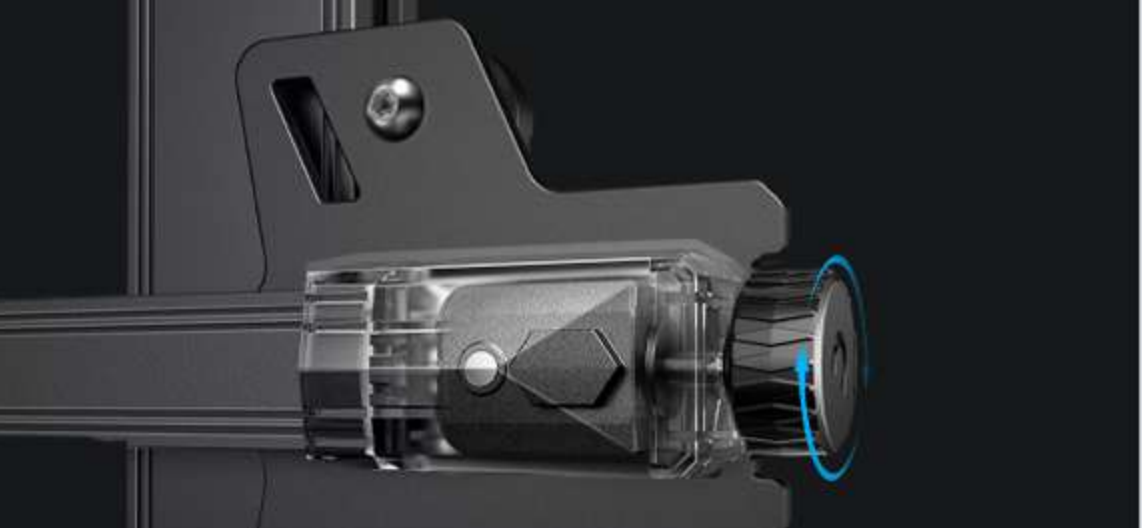
The PC spring steel magnetic build plate has good adhesion to the model and it enables quick removal of the print with just a slight bend.



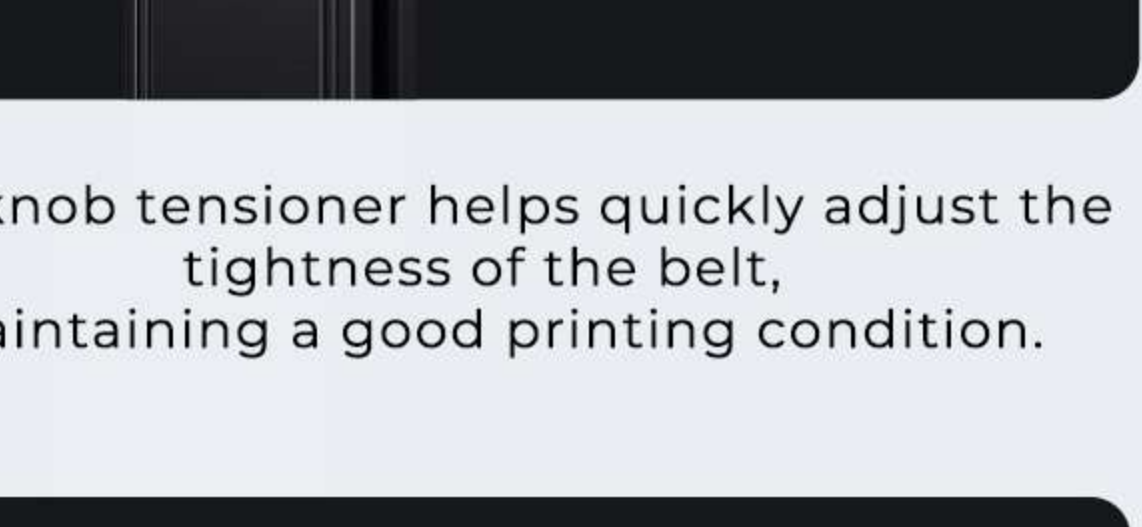
- PC Coating
- Spring Steel
- Magnetic Sticker
- Print Bed

Quick Assembly, Easy to Handle

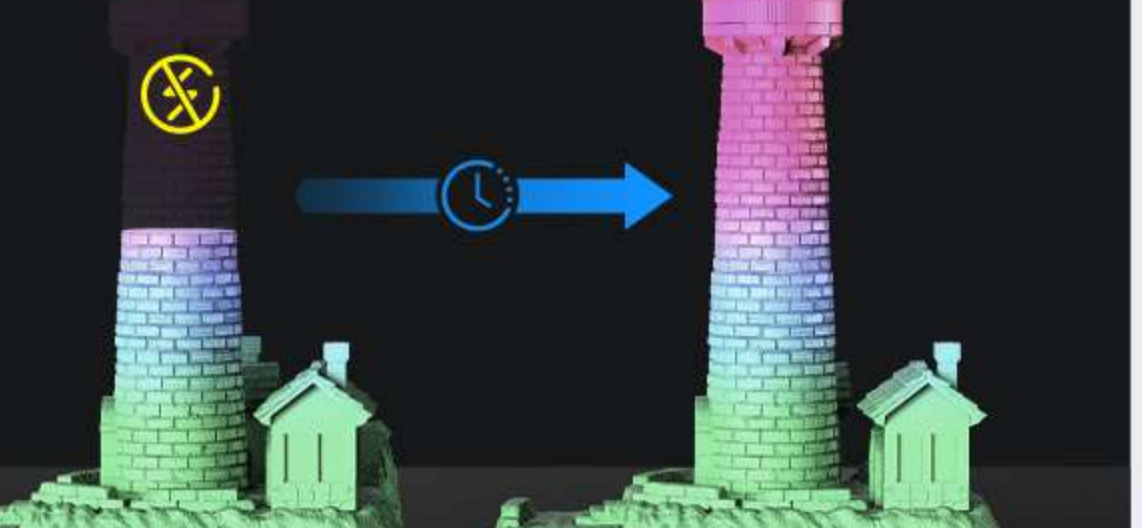
With some parts pre-installed, the assembly can be completed in 3 steps. Not a challenge at all!



③ Install Rack



① Install Gantry



② Install Screen (Buckle)

Preview the Print with New UI

The newly upgraded UI adds a model preview function, making it easier to observe the exact shape.



Print Quietly

The silent mainboard enables low-decibel operation, not bothering study or sleep.

Human-centered Design

Built-in toolbox - a perfect container for gadgets.

The knob tensioner helps quickly adjust the tightness of the belt, maintaining a good printing condition.

The resume printing function can record the data during outage and recover the print from where it's left off, reducing the risks of printing failure and filament wasting.

Product Parameters

Molding Technology: FDM

Build Volume: 220×220×250mm

Machine Dimension: 438×424×472mm

Package Dimension: 520×505×280mm

Net Weight: 7.8kg

Gross Weight: 9.8kg

Printing Speed: Maximum 120mm/s

Printing Precision: ±0.1mm

Layer Height: 0.1mm-0.4mm

Filament Diameter: 1.75mm

Nozzle Quantity: 1

Nozzle Diameter: 0.4 mm (standard)

Nozzle Temperature: up to 260°C

Heat Bed Temperature: up to 100°C

Build Surface: PC Spring Steel Magnetic Build Plate

Extruder: Bowden Extruder

Extrusion Material: Full-metal

Leveling Mode: CR Touch Auto-leveling

Display: 4.3" Color Knob Screen

Mainboard: 32-bit Silent Mainboard

Resume Printing: Yes

Rated Voltage: 100-120V~, 200-240V~, 50/60Hz

Rated Power: 350W

Slicing Software: Creality Slicer/ Cura/ Simplyfy 3D

Data Transmission Method: Micro USB/TF Card

3D File Format: STL/OBJ/AMF

Supported Filament: PLA/PETG/ABS

Supported Language: Chinese/English